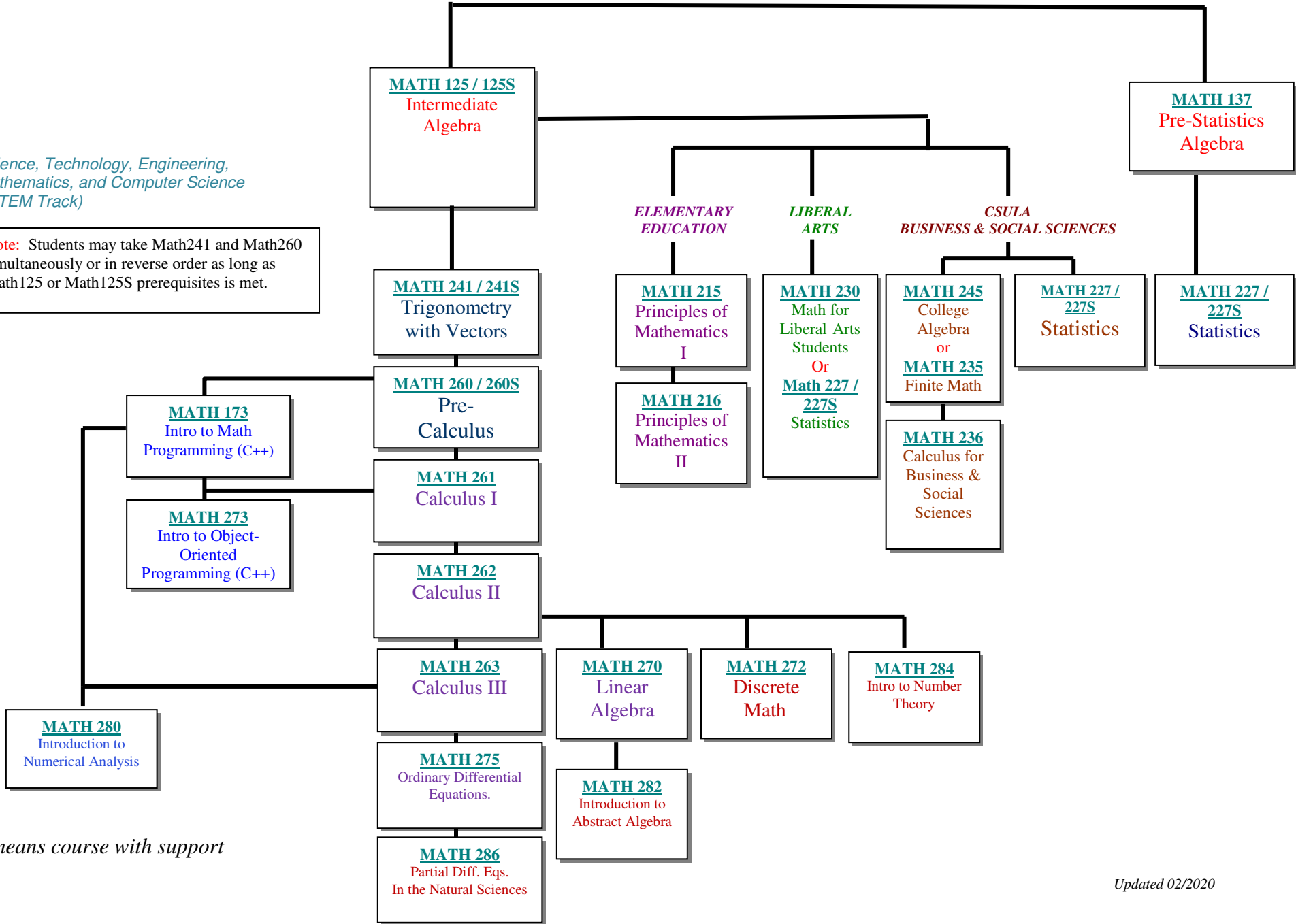


# Mathematics Skills Recommended Course Sequence

MATH 120  
Plane  
Geometry

Science, Technology, Engineering,  
Mathematics, and Computer Science  
(STEM Track)

Note: Students may take Math241 and Math260  
simultaneously or in reverse order as long as  
Math125 or Math125S prerequisites is met.



\* S means course with support