

Facilities Emergencies

▶ Abel RODRIGUEZ

What Constitutes as an Emergency?

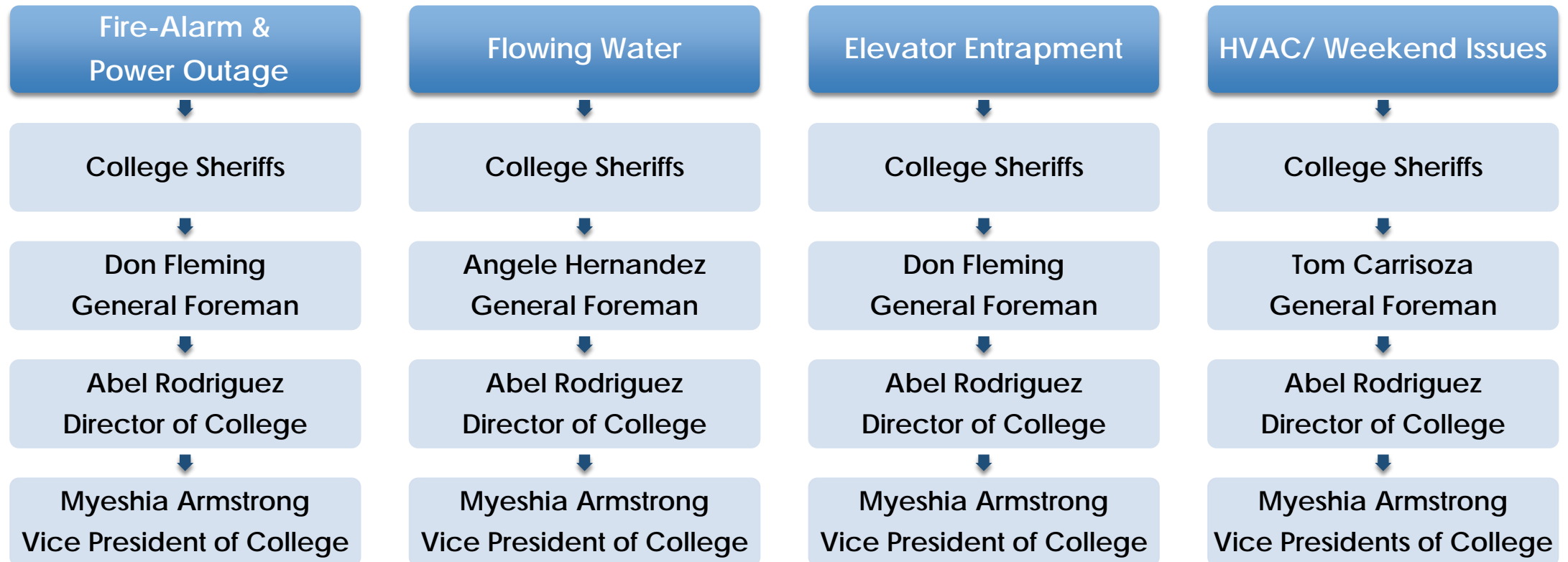
- ▶ Fire-Alarm Going Off
- ▶ Uncontrolled Flowing Water
- ▶ Flooding
- ▶ Elevator Entrapments
- ▶ Power Outage

These issues should be reported to the College's Sheriff Station

Phone#: (323)265-8800

From Campus: ext. # 8800

Campus Sheriffs use this contact flow chart for any Facility Emergencies.



Non-Emergent Calls

- Spills
- Leaks
- Clog Toilets
- Clean-up Calls
- Rooms are too Hot or too Cold
- Wall Clocks assistance
- Burned light bulbs
- Lock outs

Typical issues for a Facilities Help Desk ticket or a call to plant facilities.

Dial Maintenance:

- (323)265-8754
- (323)265-8756
- (323)265-8764